

# Reflective Living with Dr. Angela

## Logical/Mathematical Intelligence

### Have you considered what your primary intelligence might be?

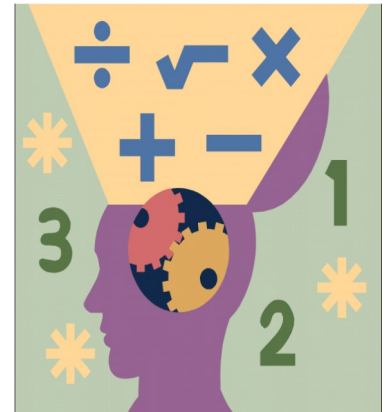
Maybe you have logical-mathematical intelligence or you are considered to have "reasoning or number smarts". It consists of the capacity to analyze problems logically, to investigate, to detect patterns and relationships, to reason, and to readily think rationally.

This intelligence is most often associated with science and mathematics as it involves thinking conceptually and abstractly.

Individuals with this intelligence invest their life's work in the sciences, in professions such as accounting and financing as well as in the crafts and trades. Individuals with this intelligence are exact, precise, and detailed oriented; they often enjoy calculating and find it easy to work with numbers.

If you have logical-mathematical intelligence, the world is waiting for you to add it all up, to put the pieces together, and to figure it all out!

This is Reflective Living with Dr. Angela at [reflectiveliving@yahoo.com](mailto:reflectiveliving@yahoo.com).



Similar topics are available electronically:

- Linguistic/Verbal Intelligence
- Interpersonal Intelligence
- Musical Intelligence
- Spatial Intelligence